

www.NewIrishArt.com presents

## Maria Dowling



1



2



3



4



5



6



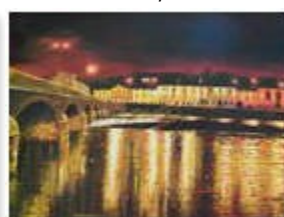
7



8



9



10

### Gallery Details

1. Crashing Wave, Oil, 30 x 40cm
2. Rocky Coast, Oil, 30 x 40cm
3. Cliff Walk, Oil, 30 x 40cm
4. Breaking Wave, Oil, 30 x 40cm
5. The Blackwater at Ballyhooly, Oil, 100 x 100cm
6. Evening Light, Oil, 50 x 70cm
7. Paddling, Acrylic, 80 x 60cm
8. This Way, Oil, 50 x 100cm
9. St. Mary's, Acrylic, 50 x 70cm
10. Fermoy at Night, Oil, 50 x 70cm

Online Preview at:

<http://www.NewIrishArt.com/MariaDowling>